

THE ISLAND TWINS: A SELF GUIDED MOTORCYCLE TOUR



BEST ADVICE - BEST TOURS - BEST BIKES

The Twin Islands Tour

Motorcycling Nirvana - Sheer, unadulterated, two-wheeled bliss. This tour combines the best of our [south island](#) tours with five days spent on the [north island](#) to bring you the finest New Zealand has to offer.

Mix together the spectacular alpine heights and intricate fiordland scenery of the [south island](#), with a taster of the [north island's](#) endless sandy beaches, verdant green pastureland, eponymous flocks of sheep, lush fruit plantations and famous snow covered volcanic peaks of [Lord of the Rings](#) fame.

Departing from [Christchurch](#), this is a one way trip ending in Auckland which offers unrivalled scenery and unsurpassed riding, on some of the finest roads the world has to offer.

It's an amazing journey through one of the most beautiful countries on earth, on the best mode of transport known to man...the motorcycle!



Self Guided Tour THE TWIN ISLANDS TOUR



Mount Cook / Aoraki



Self Guided Tour THE TWIN ISLANDS TOUR



Self Guided Tour THE TWIN ISLANDS TOUR

Mount Cook / Aoraki

One of the first, and arguably most impressive things you will see in New Zealand, Mount Cook will get you in the right frame of mind for riding the fantastic alpine roads which surround this natural marvel. At 3,574 metres high Mount Cook dominates the surrounding area for miles around, gazing down on the 'Four Peaks Range' and motorcyclists alike as they enjoy the twisting roads, turquoise lakes, snow capped mountains and everything else this [World Heritage Area](#) incorporates.

A ski plane flight over the Tasman Glacier would be a good opportunity to get a birds eye view of the sort of terrain you'll be riding over as you explore what New Zealand has to offer.





Fiordland

Fiordland

Superb roads and heart arrestingly awesome scenery must mean you're in Fiordland, one of the most dramatic and beautiful regions of New Zealand. This indescribably picturesque area was carved out by glaciers over 100,000 years ago and is on every tourist's agenda.

Waterfalls cascade into the deep black fiords, immeasurably ancient rainforest clings to the slopes of the mountains and shimmering lakes hold secrets just waiting to be discovered. A region untouched by time, and seemingly crafted specifically for motorcycle touring.

Visit Milford Sound for a spectacular cruise, investigate the smaller fiords by kayak or simply explore the area on your bike. There is only one main road in and out but you won't mind, you'll spend ages pulling over and admiring the scenery.



Queenstown



Self Guided Tour THE TWIN ISLANDS TOUR



Queenstown

The aptly titled 'adrenaline capital of the world' has plenty to keep you busy, and is situated right on the shores of the majestic 'Lake Wakatipu' which forms the perfect backdrop to any of the thrilling activities on offer.

If biking round New Zealand wasn't exciting enough as it is, you can choose from bungee jumping, jet-boating, white-water rafting, river surfing, white-water sledging, paragliding, parachuting, canyoning, mountain biking and aerial sightseeing to name but a few of the activities on offer. An extra day spent in the area would ensure you get the best of what's available.

For the more mellow visitor, Queenstown has some of the best restaurants on the South Island, fascinating sightseeing tours, spa treatments, boutique shopping and much, much more...



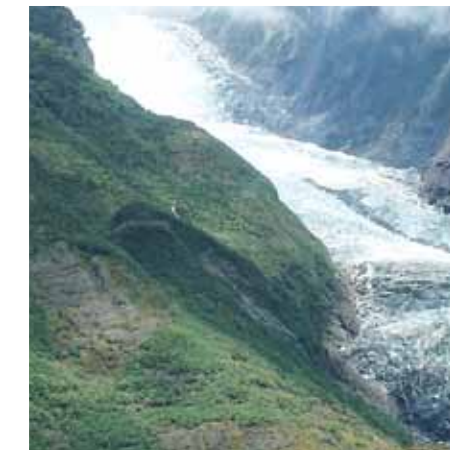
Westland National Park

Westland National Park

The ride over the Alps via the beautiful [Haast Pass](#), through the [Westland National Park](#) is probably one of the best motorcycling road you can imagine. The route twists around steep slopes with breathtaking views over the glacier lakes of [Hawea](#) and [Wanaka](#), then down into the lakeside town of the same name. Peaks that are over 3000 metres high relax into lowland rainforest at the edge of the Tasman Sea, this area is an exquisitely beautiful slice of wilderness.

After experiencing the fantastic riding in the area, you'll arrive at two of the fastest moving glaciers in the world - '[Fox](#)' and '[Franz Josef](#)'. Tumbling rivers of ice, streaking down the valleys towards the sea at a rate of up to four metres per year. There are plenty of great bush walks or hikes out onto the ice, but the best way to see the glaciers themselves is via helicopter.

Of course just because the glaciers are in a hurry doesn't mean you should be. An extra day experiencing the delights on offer in the National Park is time well spent.



The West Coast



The West Coast

The West Coast is an untamed place of wild rivers, lush rainforest, glaciers and geological marvels, rugged beaches and high mountain peaks. Hemmed in by the energetic Tasman sea to the west and towering peaks, lush rainforest and bush to the east, the whole area is never more than 50km wide along the whole stretch of the South Island.

The locals are a bunch of independent, fiercely self-reliant, unfailingly friendly and hospitable people. Enjoy their company along the way, but expect a lot of unspoilt wilderness as there are only 31,000 residents in the whole region!

The 'Pancake Rocks' and blowholes at Punakaiki are among the West Coast's most famous sights, formed by the relentless actions of wind and rain over thousands of years they truly are a sight worth seeing.

There are plenty of opportunities to stretch your legs off the bike along the way. Scenic walks that explore the surf pounded beaches, native forest, lakes and natural hot pools will ensure that there's never a dull moment.





Abel Tasman

Self Guided Tour THE TWIN ISLANDS TOUR

Abel Tasman

Once little known region of New Zealand the Abel Tasman National Park is a place that well deserves its new found reputation. A perfect blend of physical exertion and beach life make Abel Tasman a highlight of the South Island.

Golden beaches washed clear by crystal blue waters, fringe an area liberally sprinkled with caves, potholes and rolling limestone hills. Sunbathing, swimming and snorkelling can be a welcome break from the saddle, or if you're hankering after something a little more challenging, there are plenty of walking trails close at hand.



Wellington



Self Guided Tour THE TWIN ISLANDS TOUR



Wellington

Capital city of New Zealand and either the welcoming port of arrival from the South Island, or majestic harbour backdrop to your departure from the North. As well as the administrative capital, Wellington is also graced with the honour of being [Arts and Culture](#) capital of New Zealand, and as such, is blessed with a liberal sprinkling of great cafés, restaurants and bars that seem to follow the artistic types around.

Fine museums, including the internationally renowned 'Te Papa Tongarewa', a bustling waterfront, the [Symphony Orchestra](#), [New Zealand Ballet](#) and magnificently preserved 19th century buildings and so much more. You'll be passing through Wellington again on this [Ultimate Islands Tour](#), so don't worry if you can't experience everything in your first visit.

Some might argue there's more to see than you could ever fit into even a week's worth of lingering in the pretty streets though.



Lake Taupo



Lake Taupo

At the largest lake in New Zealand, the clear blue tranquil waters of Lake Taupo hide a violent secret. It was formed over 25,000 years ago in a devastating volcanic explosion that literally removed the top of the volcano, leaving behind an enormous crater. As with most big holes in the ground of course, it eventually filled with water to become Lake Taupo.

Evidence of the energetic background to the area can be seen at the '[Craters of the Moon](#)', nearby bubbling mud pools, alkaline springs and hot water geysers. If you feel energised after learning about Taupo's vigorous past, there are plenty of activities like jet skiing, parasailing, kayaking, skydiving and white water rafting keep you occupied.

Or simply pay a visit to the nearby '[Huka Falls](#)' to experience the raw power of nature, where over 220,000 litres of water roar over the cliff face every second; you can even pay a visit to the base of the falls in a jet boat if you're feeling in the mood for a revitalising shower.



Rotorua



Self Guided Tour THE TWIN ISLANDS TOUR



Rotorua

One of New Zealand's best known tourist spots, the steaming crevasses, bubbling mud pools and hot springs lead the way to invigorating thermal baths. Rotorua, on the '[Volcanic Plateau](#)' and the '[Pacific Rim of Fire](#)' is more than a hydrothermal sideshow though, much more.

It's also an important cultural centre for the [Maori](#), ancestral home to the [Te Arawa](#) people and one of the most accessible to outsiders. The culture is alive in their arts, crafts, architecture, traditional '[hangi](#)' feasts and in long remembered song and dance.

Of course, this being New Zealand, adrenaline filled activities get a look in too. One of the best mountain biking circuits in the country, zorbing, skydiving and plenty else, mean you'll probably need a relaxing thermal spa by the time you're finished in Rotorua.



Coromandel Peninsula



Self Guided Tour THE TWIN ISLANDS TOUR



Coromandel Peninsula

An area immensely popular with Kiwis everywhere, so you know this place must be something special. The Coromandel is one of the most popular and best loved holiday destinations in New Zealand, and you'll easily be able to see why.

The abundant serenity attracts 'alternative lifestyle aficionados' away from the hustle and bustle of [Auckland](#), but most come for the best beaches on the North Island and coastal scenery unrivalled anywhere. With a backdrop of rugged hills and mountains draped with lush green native forest, the pristine white sandy beaches offer a marked and pleasant contrast.

What better way to end the day than swim in crystal clear blue water, then dig a hole in the sand at [Hot Water Beach](#) and relax in your own sandy hot water spa!

Auckland

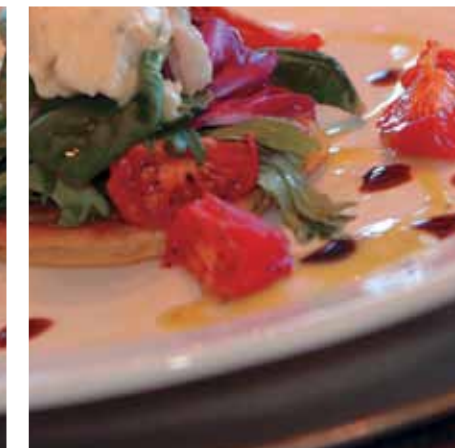


Auckland

Auckland is New Zealand's largest, most cosmopolitan city and its perfect blend of culture, harbour, islands and city lifestyle ensure there is something for everyone. You don't have to be a yachtsman to appreciate the 'City of Sails'!

Stroll through Queen Street, enjoy some of the best dining in New Zealand and cruise magnificent [Waitemata Harbour](#), the 'heart' of the city.

Wherever you are in Auckland, you're never very far from the water, hemmed in on either side by the [Tasman Sea](#) and [Pacific Ocean](#). A day spent in Auckland is a day well spent, and one that you'll remember for a long time to come.



Self Guided Tours HOW THINGS WORK

Self Guided Tours are designed to make it as easy as possible for you to arrange your bike tour in New Zealand.

We take away all the trouble and time needed to research and plan the tour, and you can be confident that you'll make the most of your time, see the best the route has to offer and have somewhere nice to stay each night. It makes for stress free days on the bike and leaves you to simply enjoy the freedom of riding, marvel at the scenery and soak up the atmosphere.

Tour costs include the bike, accommodation in nice quality 3.5 to 4 star B&Bs/motels/resorts and a very detailed itinerary with maps that will tell you the best biking route and things to see on the way.

We know what works on these trips and the pace has been designed for people that like to make good use of the bike but also enjoy stopping to admire the spectacular scenery, take short walks to things of interest and enjoy local hospitality with a great coffee or lunch at cafés and restaurants on the way.

A typical day is around 350km but on some days it will be less and others a little more depending on what there is to see. The maps provided with the itinerary will take you from one overnight stop to the next. You won't ride the most direct route, where's the fun in that in a country like New Zealand? The maps combined with the incredibly detailed itinerary document will take you on the best biking roads, tell you all about the background and history of each area and highlight things to see on the way.

'Rest' days are built into some of the longer tours in places of particular interest. For example, you can't see the delights of Milford Sound without a trip on a boat and so time is allowed in the tour for this if you wish. You don't have to take these days out but if you'd like to then we can book the excursions for you too so that you simply turn up and enjoy your day out.

It means we tailor the tour to your dates and preferences and can even book your accommodation before and after the trip if it helps. If there are other aspects of your tour in New Zealand where some expert advice and help would be useful then just ask! We love New Zealand, know most areas intimately and hope that our advice helps you leave with the same passion for the country as we have.

Thanks for your interest in these tours and we hope to share New Zealand with you sometime soon!

Warmest regards



Mark

For more information on this, or any of our other tours please visit:

www.bikeroundnz.com

or contact us directly at:

info@bikeroundnz.com

Photographs IMAGE CREDITS

The majority of the images used in this material were kindly provided by [Andras Ilkadi](#), with some additional photographs being provided by [Christian Anderson](#).

Specific image credits:

Whale tail at Kaikoura - Chris McLennan
Kayaking with Orcas - Ian Trafford
Marlborough vineyard - Ivor Wilkins
Art deco Napier - Chris McLennan
Hot springs at Rotorua - Chris Sisarich
Stylish food image - 'Lake Taupo Lodge'
Night shot of Auckland - Julian Apse
Lake Taupo - Gareth Eyres

Te Papa - 'Te Papa Museum'
Wellington harbour - Ian Trafford
Wellington - Rob Suisted
Climber - Chris McLennan
2x Bungy jumpers - 'A J Hackett Bungy New Zealand'
Mt Cook hikers - Fraser Gunn
Mt Cook - Rob Suisted
Abel Tasman coast - Ian Trafford

